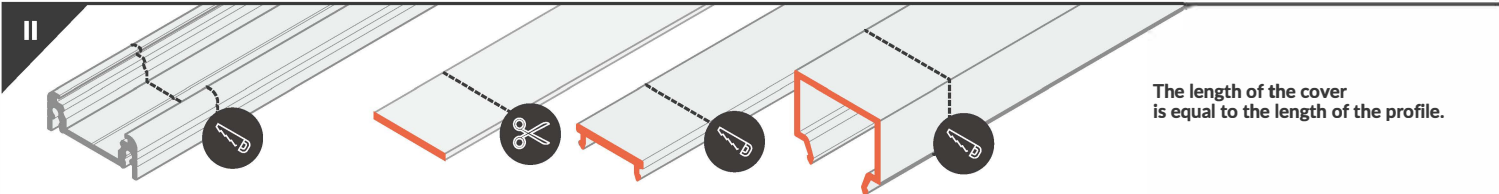
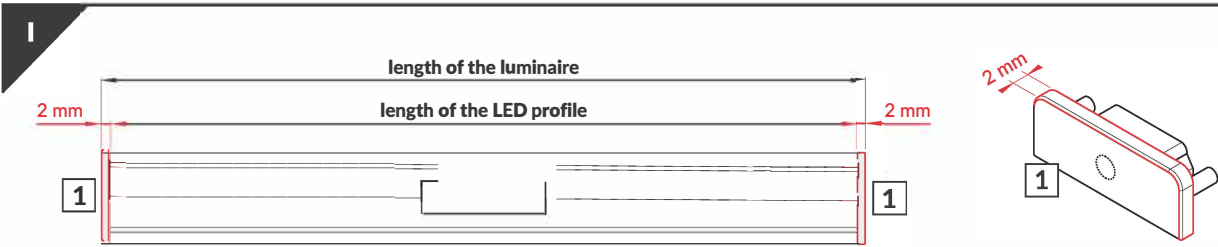
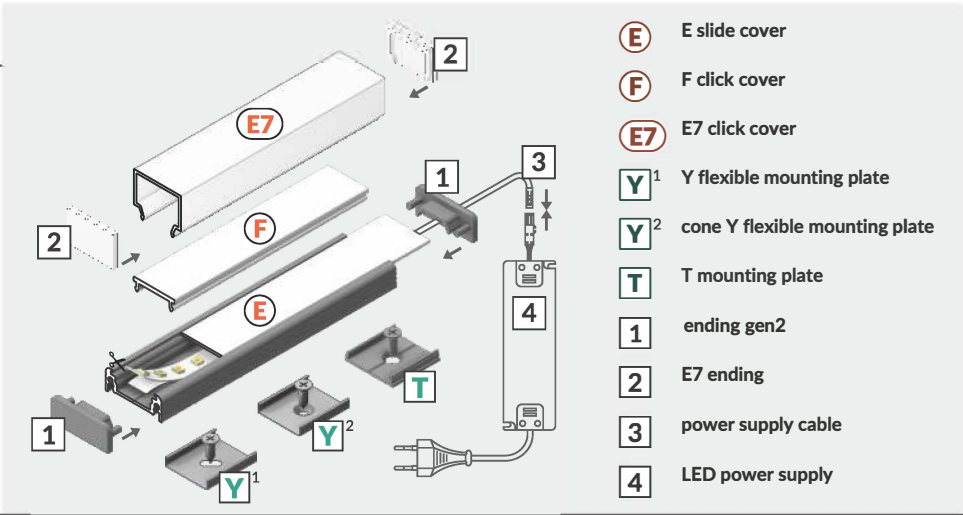
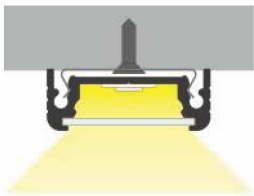
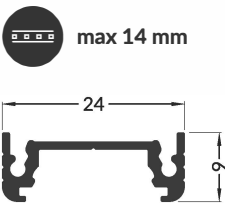
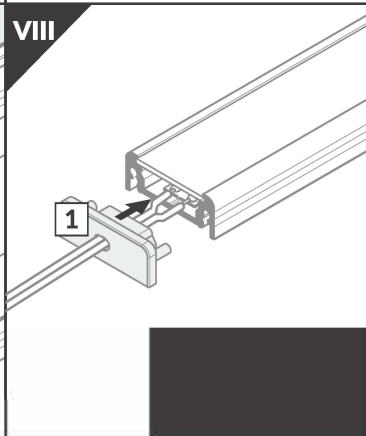
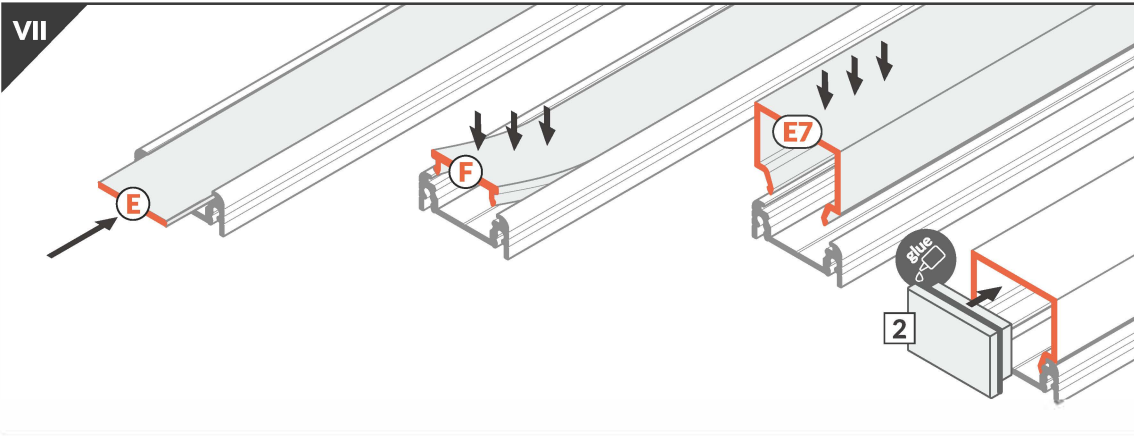
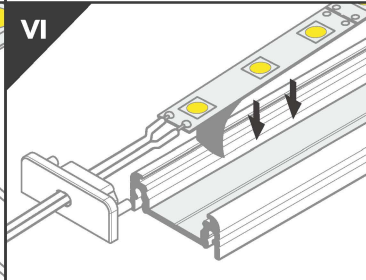
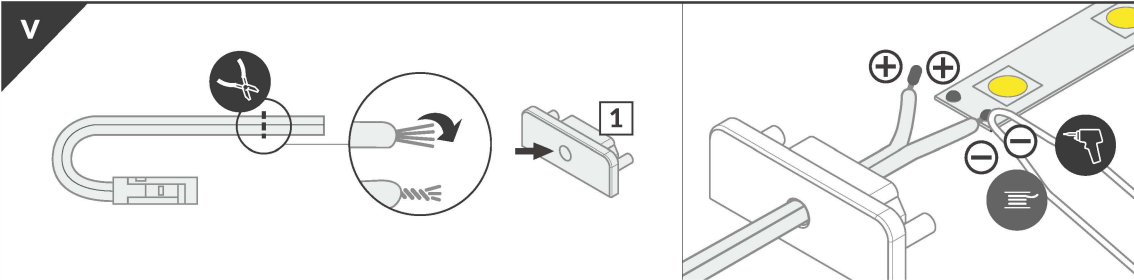
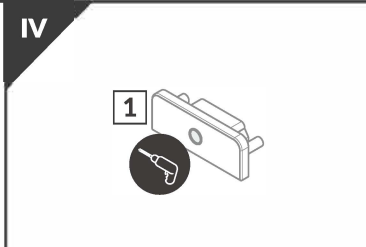
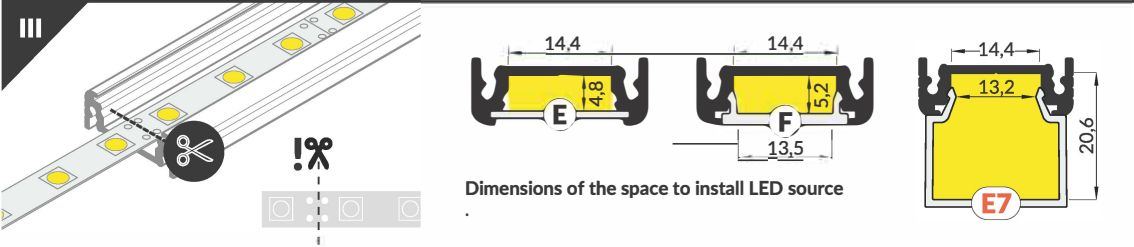


# MANUALE ISTRUZIONI

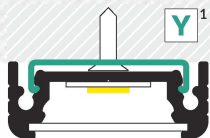


The length of the cover is equal to the length of the profile.

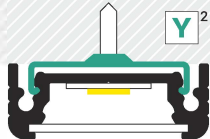


## IX MOUNTING

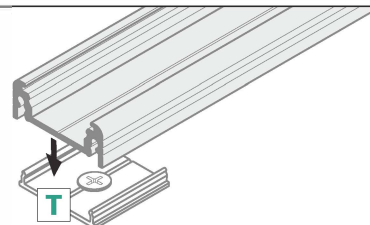
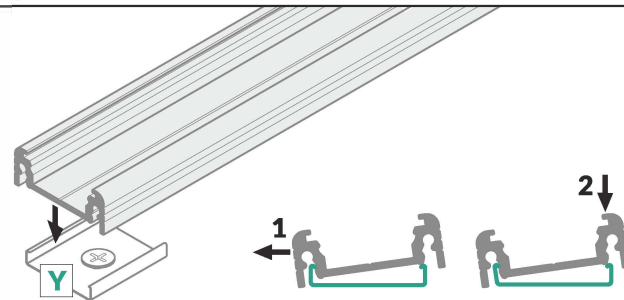
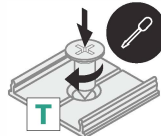
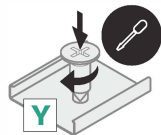
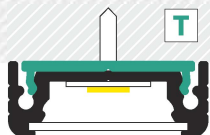
**Y flexible mounting plate**



**cone Y flexible mounting plate**

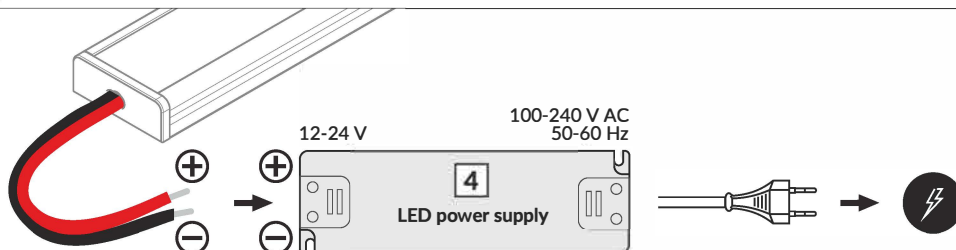


**T mounting plate**



Other mounting possibilities: with mounting glue or mounting tape, with screws

## X POWER SUPPLY

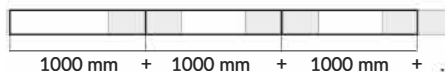
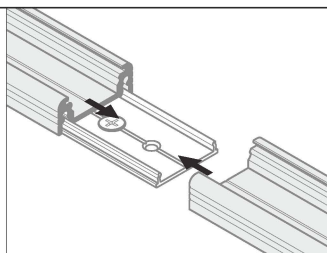
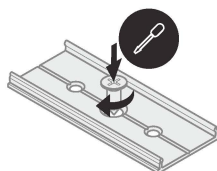


## OPTIONAL ACCESSORIES /

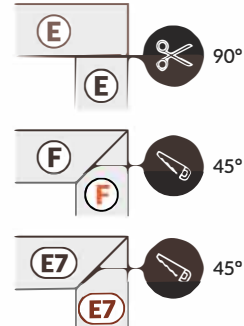
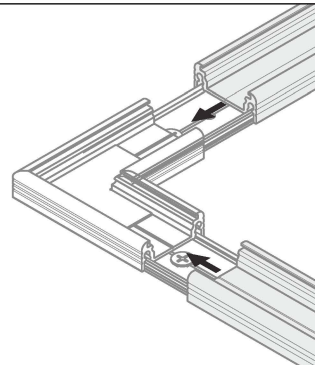
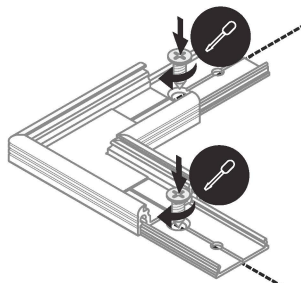
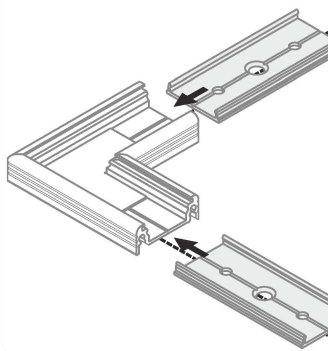


Mount the connector before installing the LED strip. In case there is no possibility of sliding the profile into connector it is recommended to mount with screws, directly to the mounting

**T connector 180 deg**



**connector 90 deg**



## ACCESSORIES

power switches  
controller + remote  
movement sensors