

Report No.:

Test Time: 2026/3/20 10:00:00

LUMINAIRE PHOTOMETRIC TEST REPORT

Luminaire Property

Manufacturer: AVTECNO
 Luminaire Type: AV0103SYN-E 3000K
 Lamp Type:
 Luminous Width: 60 mm
 Luminous Length: 60 mm
 Luminous Height: 50 mm

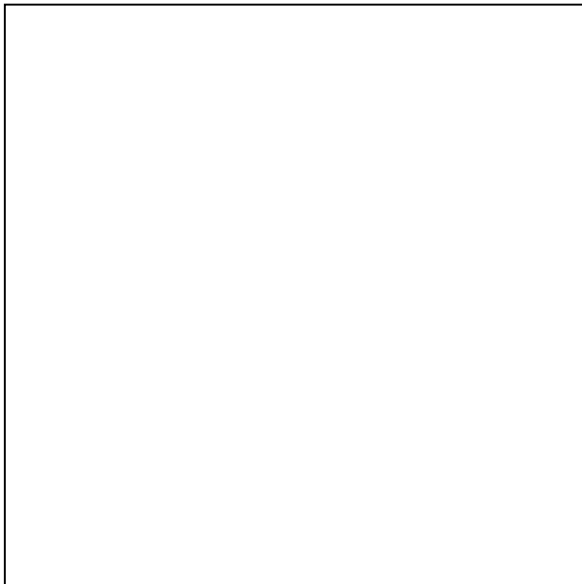
Voltage(V): 219.90 V
 Current(A): 0.0650 A
 Power(W): 13.46 W
 Power Factor: 0.9350
 Lamp Luminous Flux: 973.20

Photometric Results

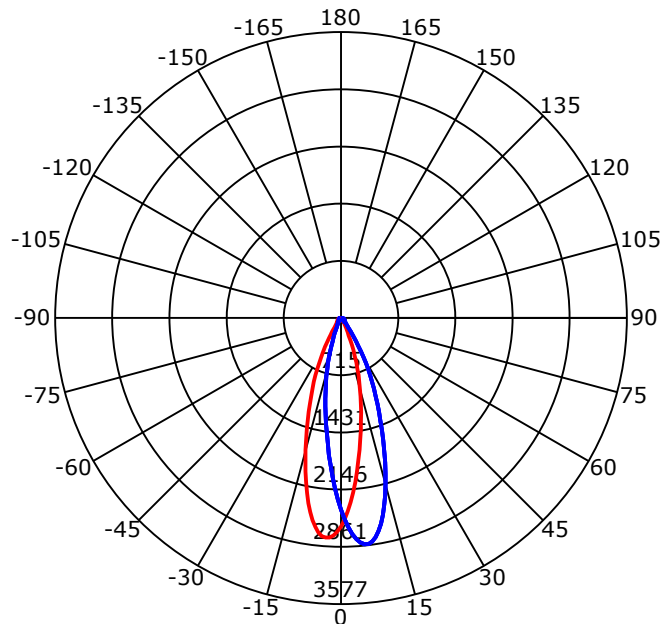
CIE Class: Direct
 Luminaire Luminous Flux: 973.2045 lm
 Downward Ratio: 100.00%
 Luminaire Efficacy Rating(LER): 72.30 lm/W
 Beam Angle(50%) C0-180,C90-270: 28.2,27.9
 Field Angle(10%) C0-180,C90-270: 54.7,54.4
 S/MH C0-180,C90-270: 0.499,0.536

Max. Intensity: 2861.46 cd
 Max.Intensity Angle: C=135 Gamma=4
 Upward Ratio: 0.00%
 Efficacy: 100.00%
 Center Intensity: 2609.26 cd
 Effective Luminous Flux: 786.22 lm
 ERP(φ use)(120deg): 945.93 lm

Picture of Luminaire



Luminous Intensity Distribution Curve



Beam Angle(50%) C0-180,C90-270: 28.2 deg,27.9 deg

C0-180 — C90-270

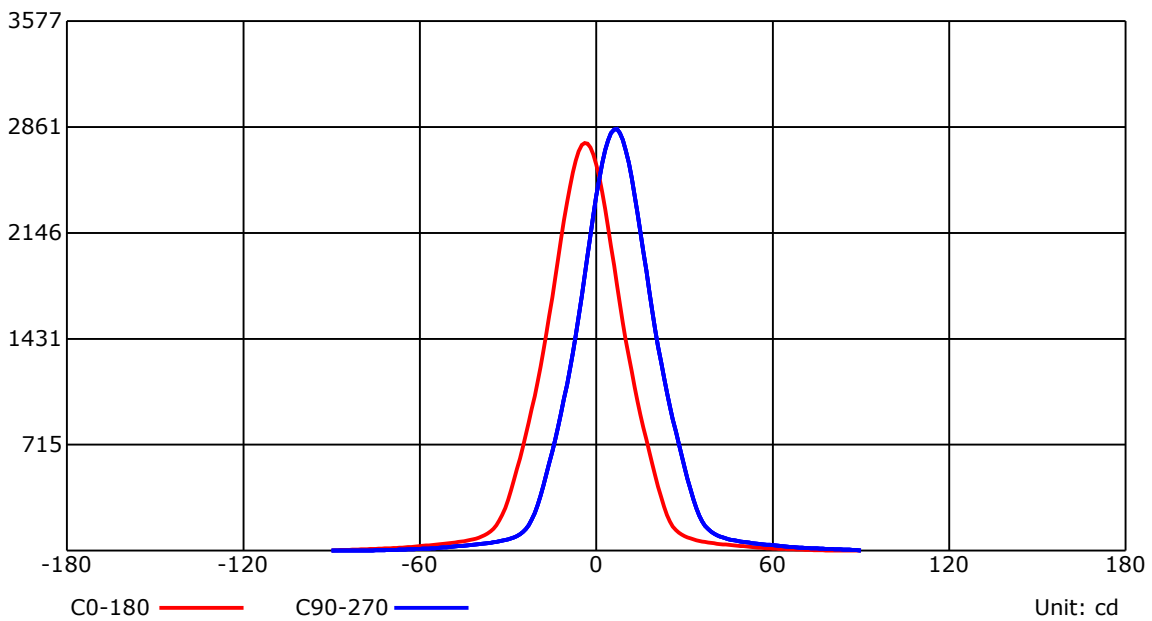
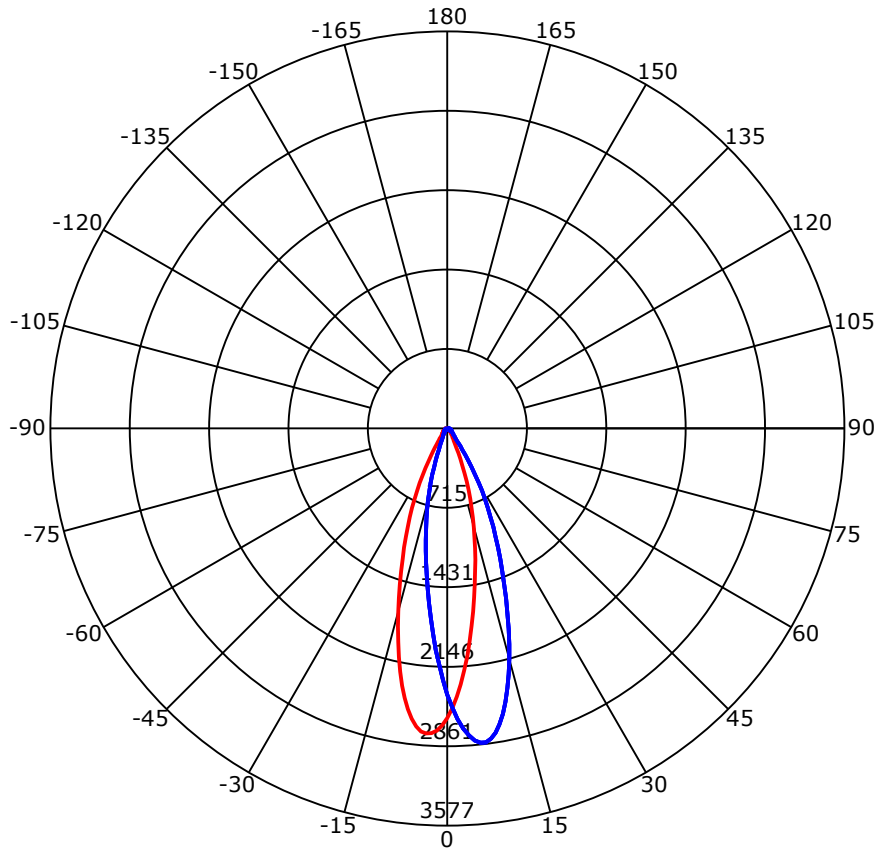
C Range: 0 - 360 Deg
 C Interval: 45.0 Deg
 Test Speed: High
 Temperature: 25
 Operators:
 Test Date: 2026/3/20 10:00:00

G Range: 0 - 90 Deg
 G Interval: 1.0 Deg
 Test System: Huipu CPM-1600B Goniophotometer
 Humidity: 65
 Test Distance: 6.88 m
 Remarks:

Report No.:

Test Time: 2026/3/20 10:00:00

Luminous Intensity Distribution Curve



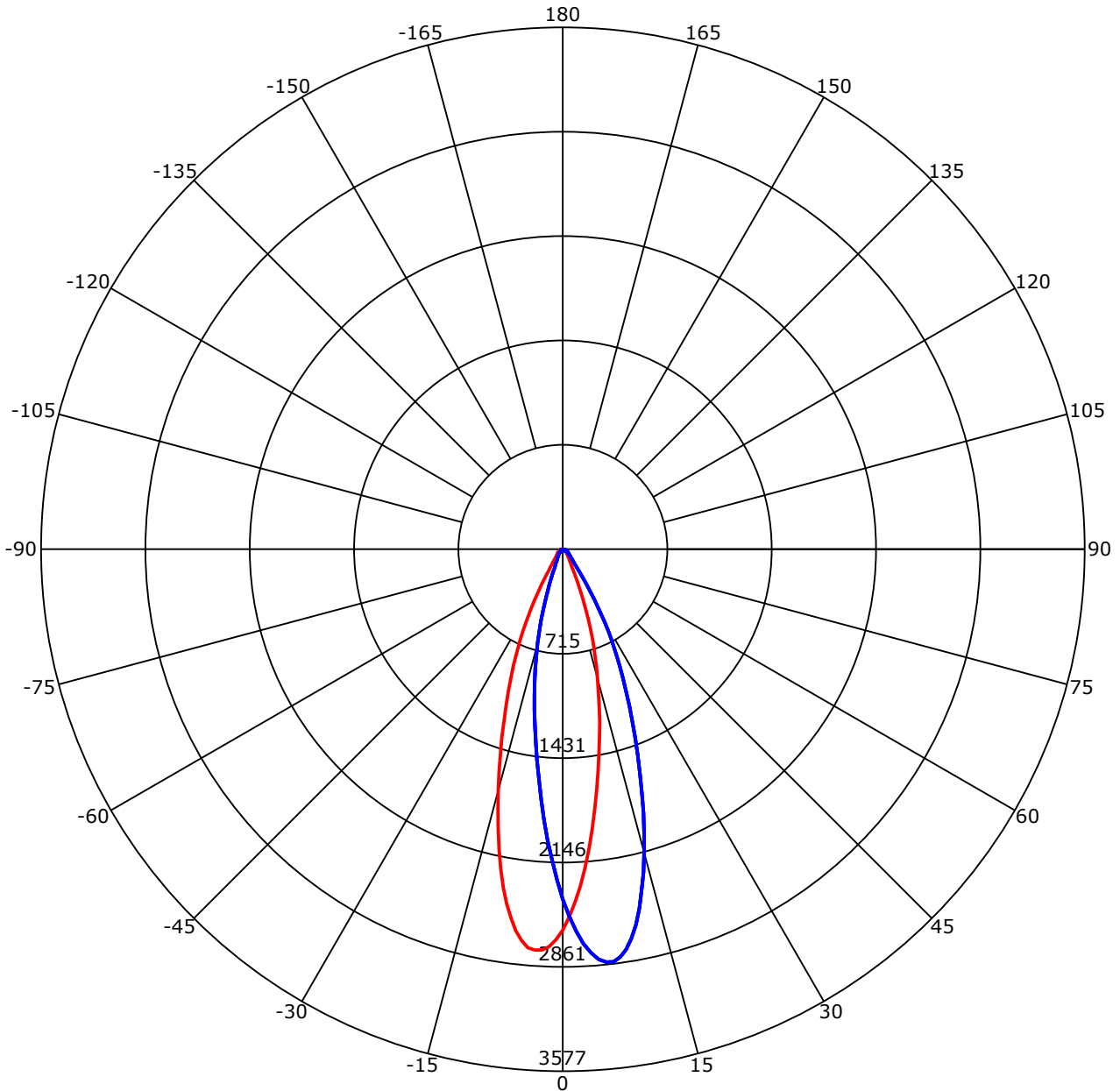
C Range: 0 - 360 Deg
 C Interval: 45.0 Deg
 Test Speed: High
 Temperature: 25
 Operators:
 Test Date: 2026/3/20 10:00:00

G Range: 0 - 90 Deg
 G Interval: 1.0 Deg
 Test System: Huipu CPM-1600B Goniophotometer
 Humidity: 65
 Test Distance: 6.88 m
 Remarks:

Report No.:

Test Time: 2026/3/20 10:00:00

Luminous Intensity Distribution Curve



C0-180 — C90-270 —
 Unit: cd/klm

C Range: 0 - 360 Deg
 C Interval: 45.0 Deg
 Test Speed: High
 Temperature: 25
 Operators:
 Test Date: 2026/3/20 10:00:00

G Range: 0 - 90 Deg
 G Interval: 1.0 Deg
 Test System: Huipu CPM-1600B Goniophotometer
 Humidity: 65
 Test Distance: 6.88 m
 Remarks:

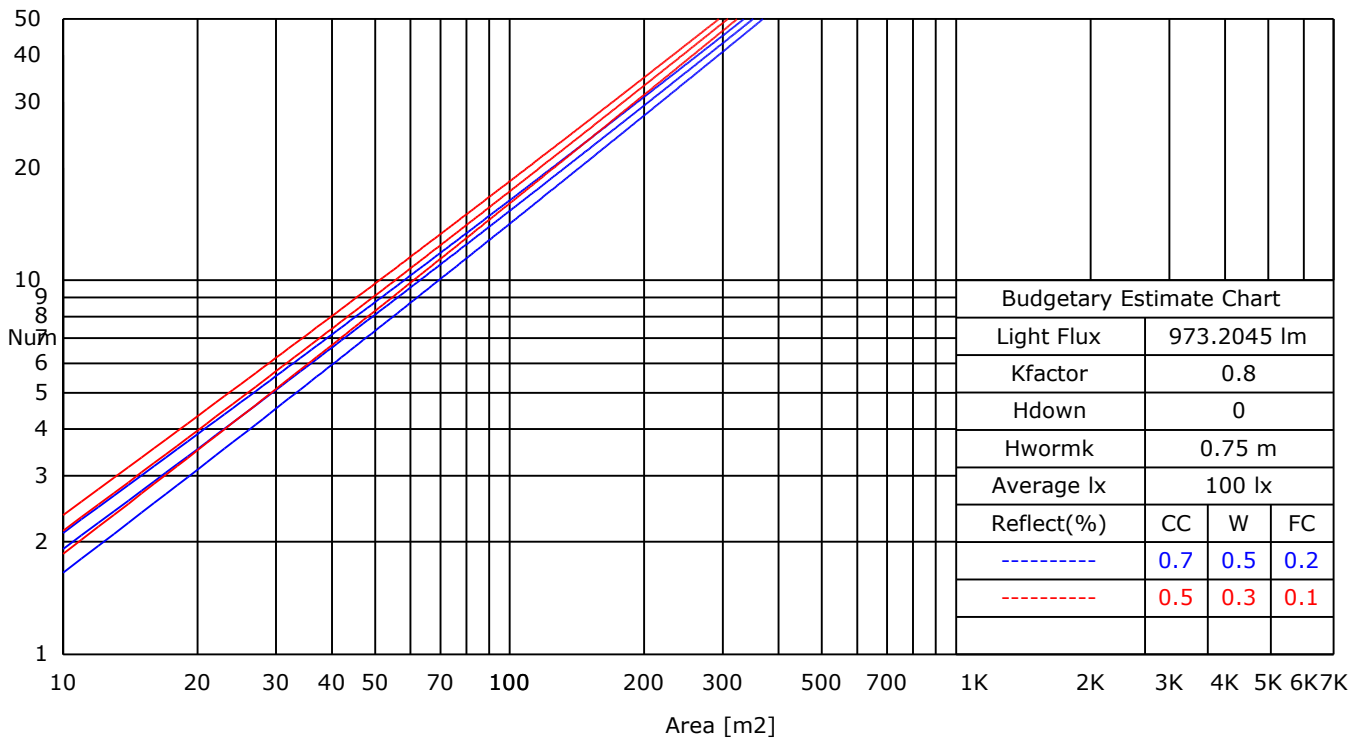
Report No.:

Test Time: 2026/3/20 10:00:00

UTILIZATION FACTORS TABLE

RHOCC	80			70			50			30			10			0
RHOW	50	30	10	50	30	10	50	30	10	50	30	10	50	30	10	0
RCR	COEFFICIENTS OF UTILIZATION FOR RHOFC=20															
0	1.19	1.19	1.19	1.16	1.16	1.16	1.11	1.11	1.11	1.06	1.06	1.06	1.02	1.02	1.02	1.00
1	0.96	0.93	0.91	0.95	0.92	0.90	0.92	0.89	0.86	0.88	0.85	0.82	0.82	0.79	0.76	0.71
2	0.91	0.89	0.87	0.91	0.88	0.86	0.88	0.85	0.82	0.85	0.81	0.78	0.80	0.76	0.73	0.68
3	0.88	0.85	0.84	0.87	0.84	0.82	0.85	0.81	0.79	0.82	0.78	0.75	0.78	0.74	0.70	0.66
4	0.84	0.82	0.81	0.84	0.81	0.79	0.82	0.78	0.76	0.79	0.75	0.72	0.76	0.71	0.68	0.64
5	0.82	0.80	0.79	0.81	0.79	0.77	0.79	0.76	0.73	0.77	0.73	0.70	0.74	0.69	0.66	0.62
6	0.79	0.77	0.76	0.79	0.76	0.75	0.77	0.73	0.71	0.74	0.71	0.68	0.72	0.67	0.64	0.60
7	0.77	0.75	0.74	0.76	0.74	0.73	0.75	0.71	0.69	0.72	0.69	0.66	0.70	0.65	0.62	0.58
8	0.75	0.74	0.73	0.74	0.72	0.71	0.73	0.70	0.67	0.71	0.67	0.64	0.68	0.64	0.60	0.57
9	0.73	0.72	0.71	0.73	0.71	0.69	0.71	0.68	0.66	0.69	0.65	0.63	0.67	0.62	0.59	0.56
10	0.72	0.70	0.69	0.71	0.69	0.68	0.69	0.66	0.65	0.67	0.64	0.61	0.65	0.61	0.58	0.55

LUMINAIRE BUDGETARY ESTIMATE DIAGRAM



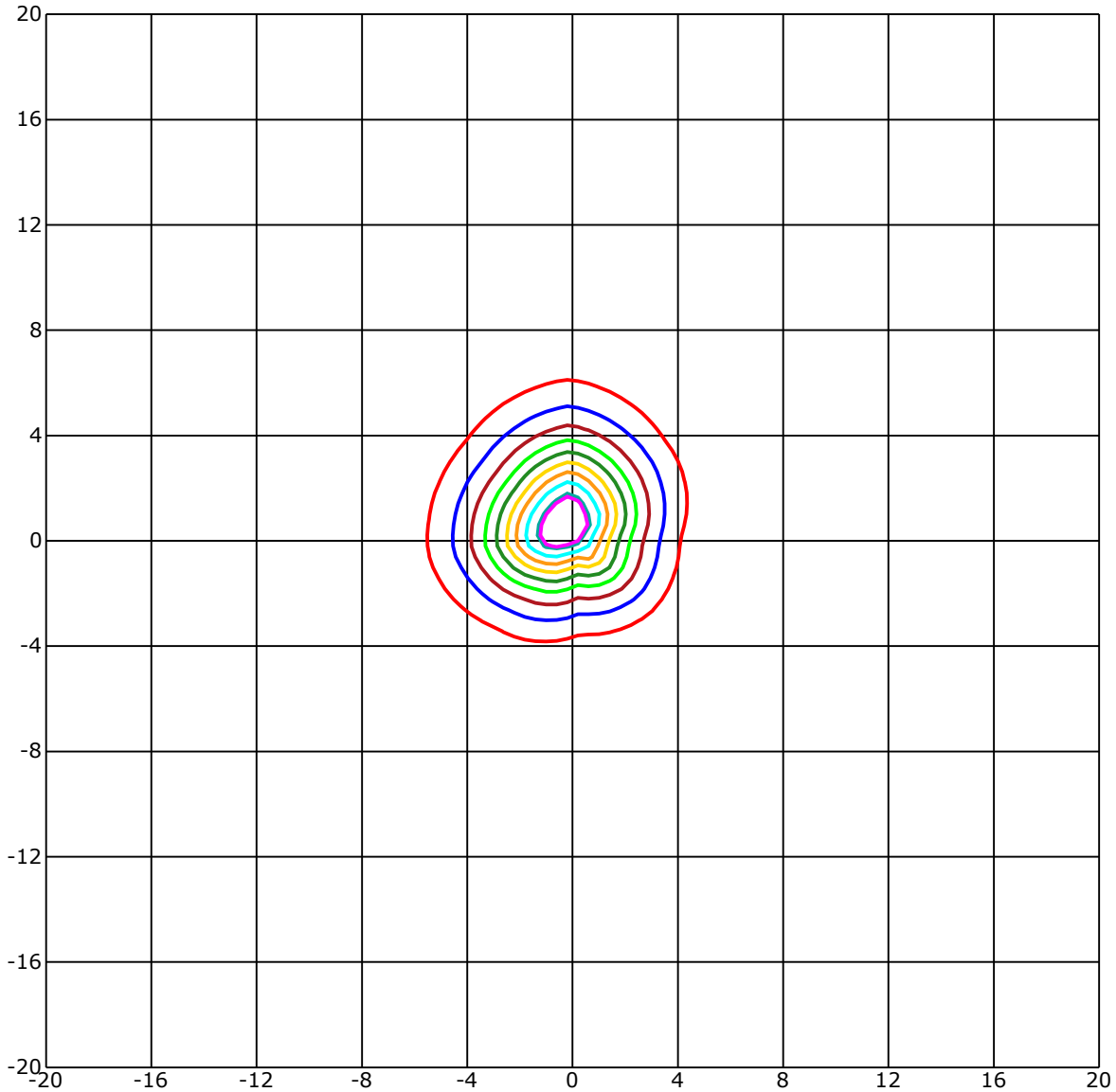
C Range: 0 - 360 Deg
 C Interval: 45.0 Deg
 Test Speed: High
 Temperature: 25
 Operators:
 Test Date: 2026/3/20 10:00:00

G Range: 0 - 90 Deg
 G Interval: 1.0 Deg
 Test System: Huipu CPM-1600B Goniophotometer
 Humidity: 65
 Test Distance: 6.88 m
 Remarks:

Report No.:

Test Time: 2026/3/20 10:00:00

ISOLX DIAGRAM



Unit of illumination:lx Height of plane:10.0(m)/32.81(ft)

— 26.146(92%Emax)	— 14.21(50%Emax)
— 25.578(90%Emax)	— 11.368(40%Emax)
— 22.736(80%Emax)	— 8.526(30%Emax)
— 19.894(70%Emax)	— 5.684(20%Emax)
— 17.052(60%Emax)	— 2.842(10%Emax)

C Range: 0 - 360 Deg
 C Interval: 45.0 Deg
 Test Speed: High
 Temperature: 25
 Operators:
 Test Date: 2026/3/20 10:00:00

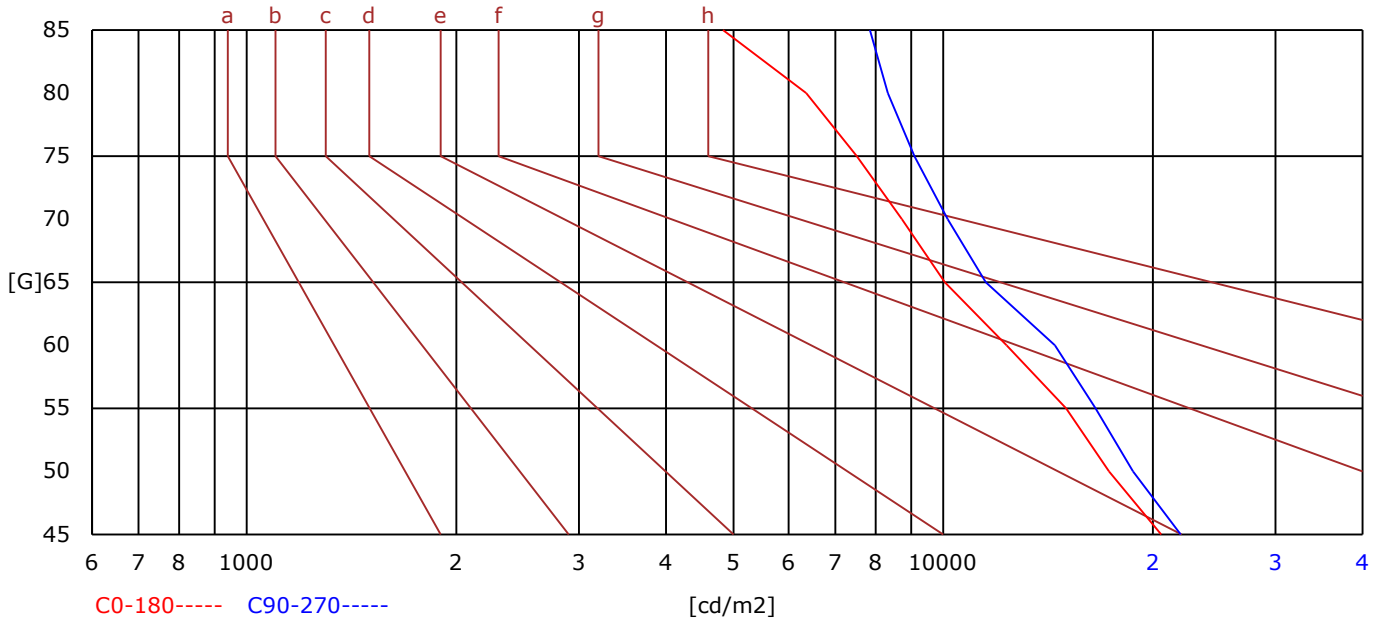
G Range: 0 - 90 Deg
 G Interval: 1.0 Deg
 Test System: Huipu CPM-1600B Goniophotometer
 Humidity: 65
 Test Distance: 6.88 m
 Remarks:

Report No.:

Test Time: 2026/3/20 10:00:00

BRIGHT LIMIT DIAGRAM

C/G	45	50	55	60	65	70	75	80	85
C0	20547	17305	15015	12333	10049	8727	7519	6360	4828
C90	21923	18737	16551	14463	11511	10149	9094	8329	7845
Dazzle	Quality	Illuminance	---	---	---	---	---	---	---
1.15	A	2000	1000	500	<=300				
1.5	B		2000	1000	500	<=300			
1.85	C			2000	1000	500	<=300		
2.2	D				2000	1000	500	<=300	
2.55	E					2000	1000	500	<=300
---	---	a	b	c	d	e	f	g	h



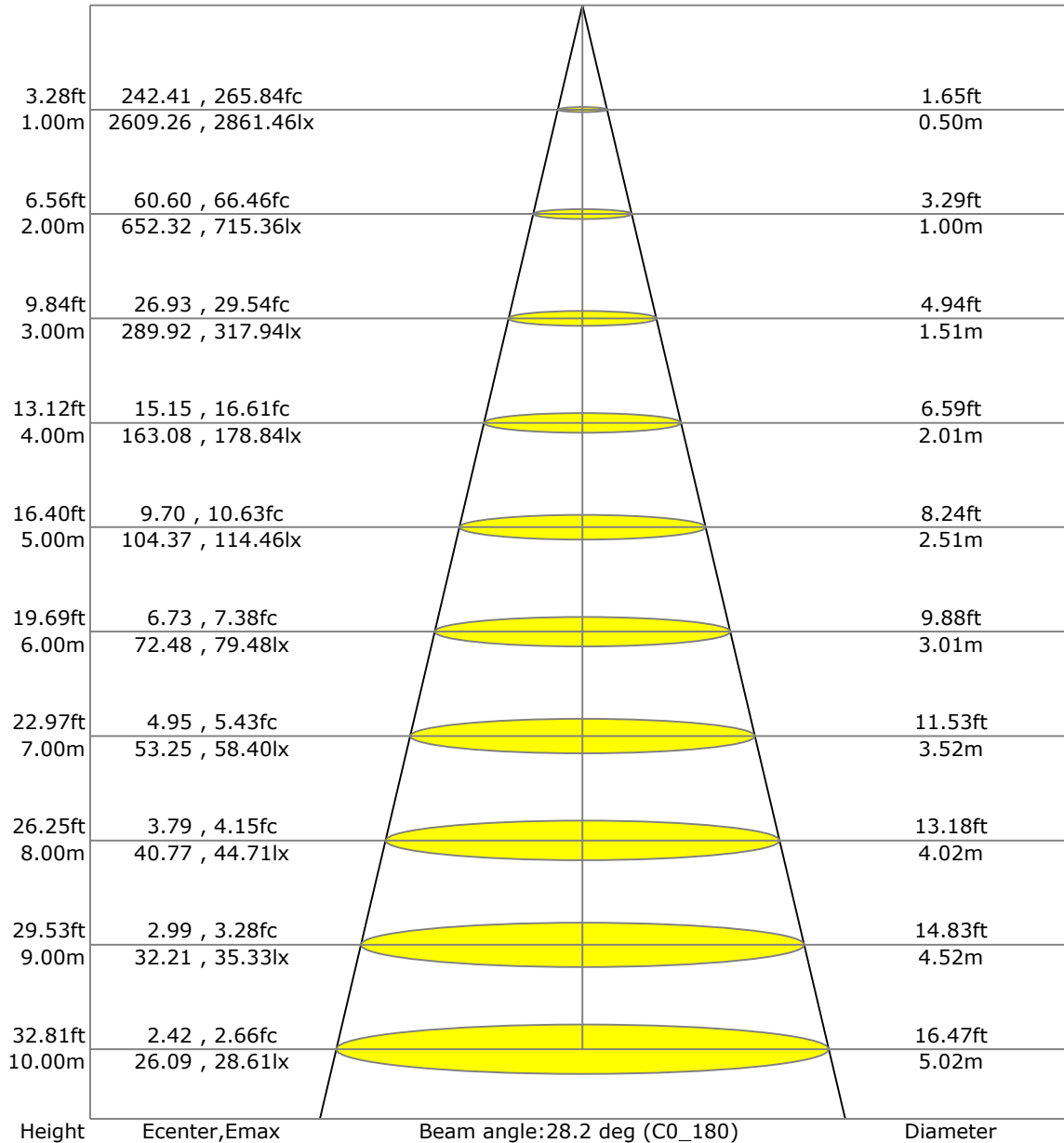
C Range: 0 - 360 Deg
 C Interval: 45.0 Deg
 Test Speed: High
 Temperature: 25
 Operators:
 Test Date: 2026/3/20 10:00:00

G Range: 0 - 90 Deg
 G Interval: 1.0 Deg
 Test System: Huipu CPM-1600B Goniophotometer
 Humidity: 65
 Test Distance: 6.88 m
 Remarks:

Report No.:

Test Time: 2026/3/20 10:00:00

LX-DISTANCE DIAGRAM



C Range: 0 - 360 Deg
 C Interval: 45.0 Deg
 Test Speed: High
 Temperature: 25
 Operators:
 Test Date: 2026/3/20 10:00:00

G Range: 0 - 90 Deg
 G Interval: 1.0 Deg
 Test System: Huipu CPM-1600B Goniophotometer
 Humidity: 65
 Test Distance: 6.88 m
 Remarks:

Report No.:

Test Time: 2026/3/20 10:00:00

UGR(Unified Glare Rating) TABLE

RHOCC	70	70	50	50	30	70	70	50	50	30
RHOW	50	30	50	30	30	50	30	50	30	30
RHOF	20	20	20	20	20	20	20	20	20	20
Room Size X Y	Viewed Endwise					Viewed Crosswise				
2H 2H	12.82	12.87	13.02	13.06	13.30	13.93	13.99	14.13	14.18	14.42
3H	12.93	12.98	13.13	13.18	13.42	13.96	14.01	14.16	14.20	14.45
4H	12.94	13.00	13.15	13.20	13.45	13.95	14.00	14.16	14.20	14.45
6H	12.94	12.99	13.15	13.19	13.45	13.93	13.99	14.15	14.19	14.44
8H	12.93	12.99	13.15	13.19	13.44	13.92	13.98	14.14	14.18	14.43
12H	12.92	12.98	13.14	13.18	13.44	13.91	13.97	14.13	14.18	14.43
4H 2H	13.47	13.53	13.68	13.72	13.97	15.50	15.56	15.71	15.76	16.01
3H	13.68	13.74	13.90	13.94	14.20	15.61	15.67	15.83	15.88	16.13
4H	13.74	13.79	13.97	14.01	14.26	15.62	15.67	15.85	15.89	16.15
6H	13.76	13.82	14.00	14.04	14.30	15.60	15.66	15.84	15.88	16.14
8H	13.76	13.82	14.01	14.05	14.31	15.59	15.65	15.83	15.87	16.14
12H	13.76	13.81	14.01	14.04	14.31	15.58	15.63	15.83	15.86	16.13
8H 4H	13.50	13.56	13.72	13.76	14.01	16.08	16.14	16.30	16.34	16.60
6H	13.87	13.92	14.12	14.16	14.43	16.37	16.43	16.63	16.66	16.94
8H	13.88	13.93	14.15	14.18	14.46	16.36	16.41	16.63	16.66	16.94
12H	13.90	13.94	14.17	14.20	14.48	16.35	16.40	16.62	16.65	16.93
12H 4H	13.81	13.86	14.06	14.09	14.36	16.67	16.73	16.92	16.96	17.23
6H	13.86	13.91	14.12	14.16	14.43	16.72	16.77	16.98	17.02	17.29

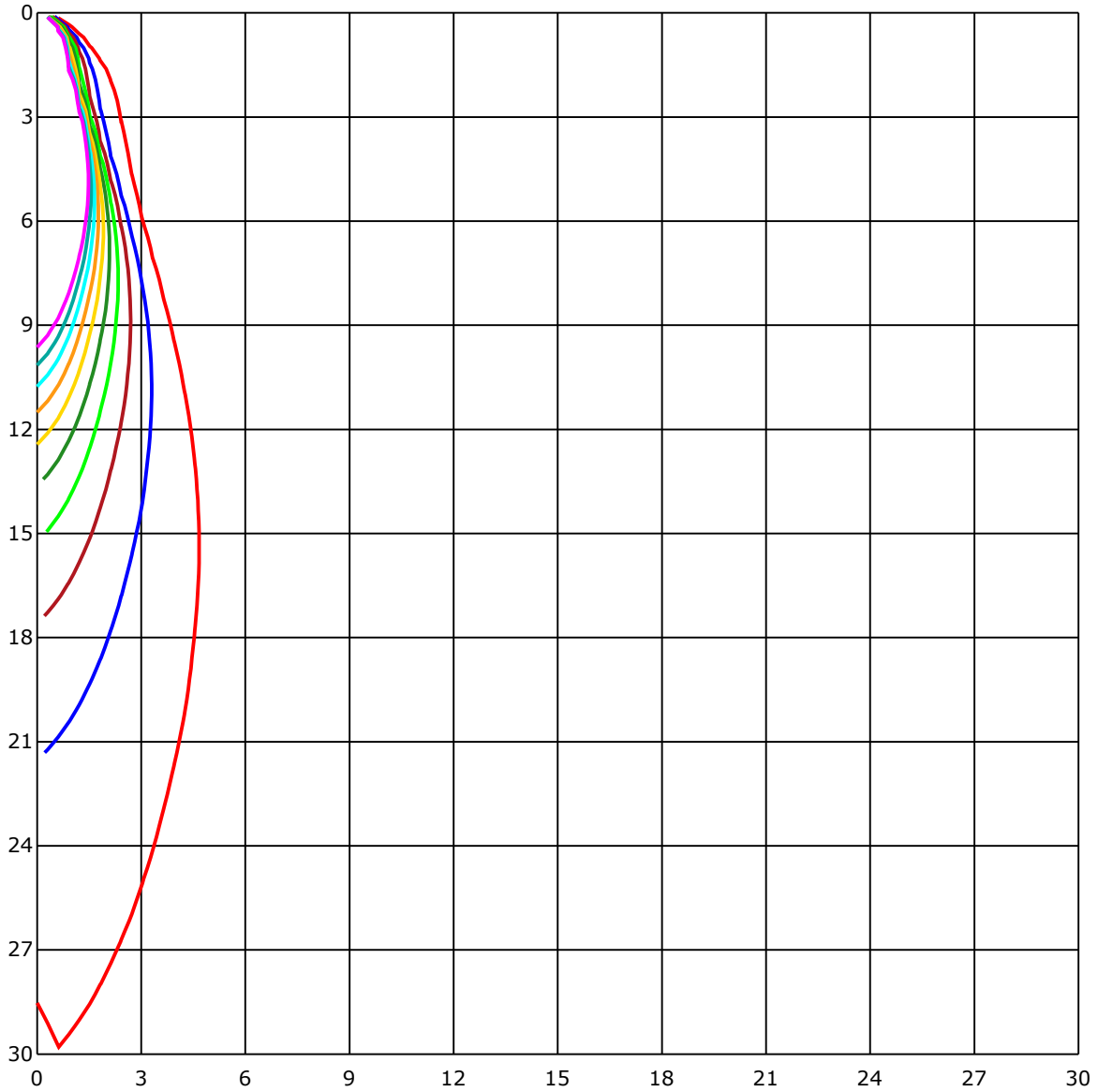
C Range: 0 - 360 Deg
 C Interval: 45.0 Deg
 Test Speed: High
 Temperature: 25
 Operators:
 Test Date: 2026/3/20 10:00:00

G Range: 0 - 90 Deg
 G Interval: 1.0 Deg
 Test System: Huipu CPM-1600B Goniophotometer
 Humidity: 65
 Test Distance: 6.88 m
 Remarks:

Report No.:

Test Time: 2026/3/20 10:00:00

SPACE ISOLX DIAGRAM



Unit of illumination:lx

- | | |
|----------|----------|
| — 28.135 | — 14.067 |
| — 25.321 | — 11.254 |
| — 22.508 | — 8.44 |
| — 19.694 | — 5.627 |
| — 16.881 | — 2.813 |

C Range: 0 - 360 Deg
 C Interval: 45.0 Deg
 Test Speed: High
 Temperature: 25
 Operators:
 Test Date: 2026/3/20 10:00:00

G Range: 0 - 90 Deg
 G Interval: 1.0 Deg
 Test System: Huipu CPM-1600B Goniophotometer
 Humidity: 65
 Test Distance: 6.88 m
 Remarks:

Report No.:

Test Time: 2026/3/20 10:00:00

LUMINOUS DISTRIBUTION INTENSITY DATA

Gamma\C	C0	C45	C90	C135	C180	C225	C270	C315	C360	
G0	2609.26	2649.59	2397.11	2691.72	2609.26	2649.59	2397.11	2691.72	2609.26	
G1	2519.47	2690.06	2513.79	2763.05	2675.34	2596.01	2267.74	2598.14	2519.47	
G2	2418.17	2696.31	2619.34	2822.93	2723.67	2517.67	2129.81	2493.01	2418.17	
G3	2308.55	2686.56	2706.82	2853.7	2749.04	2431.19	1996.66	2373.39	2308.55	
G4	2184.86	2657.26	2771.05	2861.46	2753.3	2326.06	1857.59	2242.89	2184.86	
G5	2056.44	2601.74	2820.33	2844.14	2740.43	2211.18	1719.0	2106.67	2056.44	
G6	1927.27	2532.53	2845.03	2805.18	2697.4	2089.06	1580.21	1973.47	1927.27	
G7	1793.45	2444.35	2847.69	2746.15	2634.02	1961.54	1453.21	1830.99	1793.45	
G8	1665.37	2344.57	2821.23	2668.57	2553.88	1833.92	1334.36	1699.49	1665.37	
G9	1539.5	2232.24	2775.83	2564.72	2458.27	1707.35	1227.48	1568.24	1539.5	
G10	1423.49	2109.27	2706.2	2454.05	2352.76	1578.79	1121.12	1447.3	1423.49	
G11	1311.35	1988.9	2620.43	2335.01	2230.54	1459.89	1025.22	1327.3	1311.35	
G12	1211.76	1865.35	2517.86	2204.98	2104.35	1347.94	927.28	1222.6	1211.76	
G13	1105.31	1739.78	2399.9	2065.58	1972.05	1242.67	838.48	1116.62	1105.31	
G14	1008.13	1612.64	2280.86	1925.23	1842.3	1142.27	751.2	1020.81	1008.13	
G15	917.77	1494.02	2151.54	1785.36	1710.48	1049.88	670.07	926.19	917.77	
G16	833.46	1380.65	2022.03	1649.42	1584.95	958.33	591.63	836.92	833.46	
G17	748.45	1274.2	1888.12	1517.73	1465.24	871.66	515.8	748.83	748.45	
G18	666.42	1169.78	1751.09	1395.13	1350.64	787.6	440.3	663.82	666.42	
G19	586.85	1071.84	1621.11	1276.61	1239.03	706.66	370.39	580.98	586.85	
G20	508.47	981.29	1495.25	1166.75	1139.81	629.17	307.3	501.89	508.47	
G21	432.92	893.44	1379.23	1065.17	1043.3	554.81	252.86	426.2	432.92	
G22	361.45	807.43	1272.02	972.2	953.36	479.54	207.37	355.29	361.45	
G23	296.83	727.58	1168.17	882.12	865.84	409.06	172.06	292.05	296.83	
G24	241.5	647.82	1068.2	799.05	783.15	345.68	145.55	241.17	241.5	
G25	196.53	569.62	976.65	716.64	701.07	289.45	125.34	200.65	196.53	
G26	162.93	491.66	887.9	637.45	624.44	240.65	110.29	170.78	162.93	
G27	138.97	417.16	804.12	561.76	549.13	201.64	98.69	148.11	138.97	
G28	121.65	349.0	722.04	489.77	477.89	171.02	89.84	130.79	121.65	
G29	108.35	288.03	642.56	421.28	409.21	147.68	82.55	117.91	108.35	
G30	97.84	234.31	562.24	356.57	345.07	129.79	76.26	107.31	97.84	
G31	89.13	191.75	485.18	296.88	288.83	115.97	71.33	98.55	89.13	
G32	81.84	159.99	411.67	245.48	241.5	105.08	66.69	91.59	81.84	
G33	75.78	137.18	345.4	202.64	203.11	96.28	62.67	85.63	75.78	
G34	70.62	120.28	285.47	168.51	171.73	88.94	59.31	79.95	70.62	
G35	65.89	107.45	235.39	142.19	147.54	82.79	56.19	75.36	65.89	
G36	61.87	97.04	196.82	122.64	129.32	77.44	53.3	71.43	61.87	

C Range: 0 - 360 Deg

C Interval: 45.0 Deg

Test Speed: High

Temperature: 25

Operators:

Test Date: 2026/3/20 10:00:00

G Range: 0 - 90 Deg

G Interval: 1.0 Deg

Test System: Huipu CPM-1600B Goniophotometer

Humidity: 65

Test Distance: 6.88 m

Remarks:

Report No.:

Test Time: 2026/3/20 10:00:00

LUMINOUS DISTRIBUTION INTENSITY DATA(Continue 1)

Gamma\C	C0	C45	C90	C135	C180	C225	C270	C315	C360	
G37	58.22	88.61	166.9	107.54	114.93	72.8	50.6	67.69	58.22	
G38	55.05	81.27	144.56	95.24	103.95	68.82	47.9	64.28	55.05	
G39	52.12	75.26	128.09	85.96	95.0	65.18	45.68	61.16	52.12	
G40	49.32	70.2	114.55	78.53	87.66	62.06	43.45	58.36	49.32	
G41	46.86	65.94	104.37	72.37	81.27	58.98	41.32	55.57	46.86	
G42	44.73	61.68	95.57	67.07	76.07	56.33	39.38	53.06	44.73	
G43	42.6	58.17	88.33	62.81	71.62	53.68	37.49	50.74	42.6	
G44	40.75	54.91	82.22	59.12	67.83	51.31	35.5	48.09	40.75	
G45	38.77	52.3	76.97	55.81	64.23	48.75	33.8	45.73	38.77	
G46	36.83	48.8	72.56	53.06	61.11	46.39	31.86	43.78	36.83	
G47	35.03	46.44	68.73	50.41	58.17	44.35	30.1	41.8	35.03	
G48	33.42	44.4	65.04	47.57	55.52	42.36	28.31	39.71	33.42	
G49	31.76	42.03	61.68	45.39	53.06	40.57	26.6	37.68	31.76	
G50	29.82	40.04	58.84	43.36	50.79	38.53	24.85	35.93	29.82	
G51	28.02	38.1	56.42	41.32	48.19	36.78	23.0	33.89	28.02	
G52	26.22	36.21	53.63	39.67	46.06	34.79	21.21	31.95	26.22	
G53	24.47	34.36	51.17	37.73	44.02	32.9	19.45	29.87	24.47	
G54	22.72	32.57	48.52	35.97	42.03	31.1	17.85	27.83	22.72	
G55	20.92	31.0	46.48	34.18	40.04	29.11	16.57	25.99	20.92	
G56	19.12	29.16	44.31	32.66	38.29	27.22	15.48	24.33	19.12	
G57	17.66	27.41	42.41	30.86	36.21	25.32	14.44	22.86	17.66	
G58	16.47	25.51	40.28	29.3	34.41	23.53	13.58	21.68	16.47	
G59	15.34	23.9	38.48	27.6	32.52	22.2	12.59	20.4	15.34	
G60	14.44	22.2	36.54	26.03	30.67	20.97	11.64	19.31	14.44	
G61	13.4	20.64	34.6	24.24	28.92	19.93	10.79	18.37	13.4	
G62	12.45	18.89	32.76	22.53	27.03	18.74	9.94	17.23	12.45	
G63	11.45	17.75	30.91	20.78	25.13	17.66	9.23	16.0	11.45	
G64	10.7	16.33	28.97	19.08	23.38	16.61	8.38	15.29	10.7	
G65	9.85	15.29	27.08	17.51	22.06	15.62	7.62	14.06	9.85	
G66	9.09	14.25	24.99	16.47	20.92	14.67	6.86	13.16	9.09	
G67	8.24	13.4	23.48	15.38	19.64	13.87	6.25	12.26	8.24	
G68	7.48	12.4	22.06	14.34	18.56	12.97	5.68	11.5	7.48	
G69	6.77	11.55	20.97	13.3	17.66	12.16	5.06	10.7	6.77	
G70	6.11	10.74	19.74	12.5	16.61	11.22	4.4	10.03	6.11	
G71	5.49	9.89	18.7	11.55	15.53	10.51	3.83	9.14	5.49	
G72	4.97	9.04	17.61	10.79	14.77	9.7	3.22	8.52	4.97	
G73	4.26	8.38	16.66	9.89	13.82	9.14	2.65	7.86	4.26	

C Range: 0 - 360 Deg
 C Interval: 45.0 Deg
 Test Speed: High
 Temperature: 25
 Operators:
 Test Date: 2026/3/20 10:00:00

G Range: 0 - 90 Deg
 G Interval: 1.0 Deg
 Test System: Huipu CPM-1600B Goniophotometer
 Humidity: 65
 Test Distance: 6.88 m
 Remarks:

